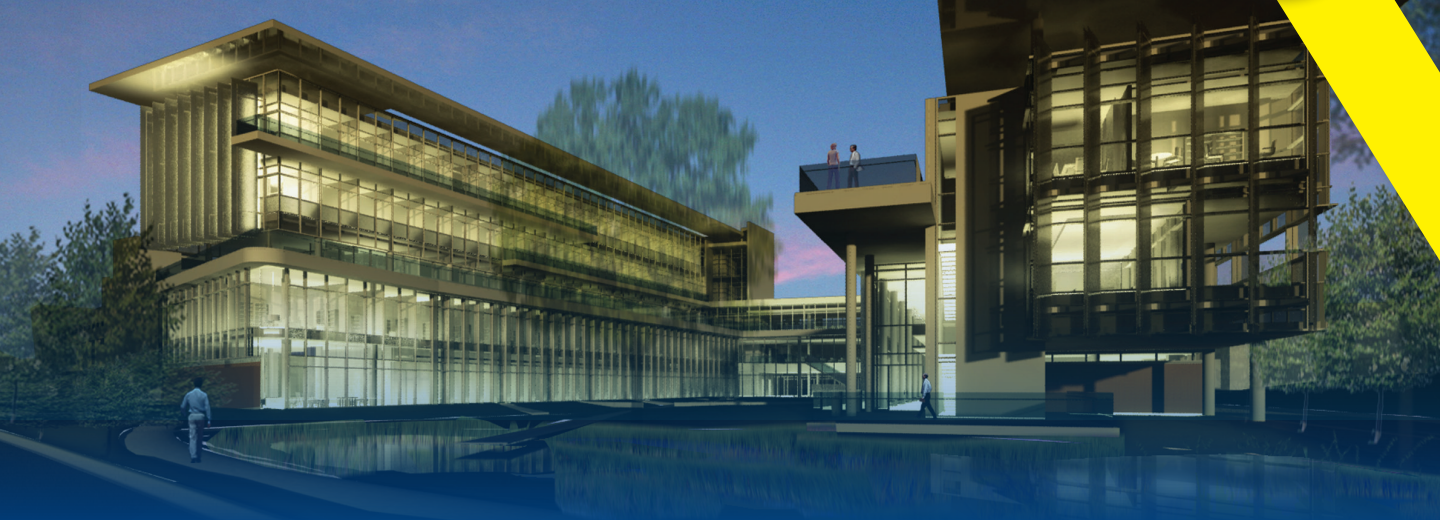


PRESIDENT J. BERNARD MACHEN INVITES YOU
TO JOIN HIM AT THE GROUNDBREAKING CEREMONY

FOR THE CLINICAL AND TRANSLATIONAL RESEARCH BUILDING



1 P.M., THURSDAY, MAY 26, 2011

NORTHEAST CORNER OF MOWRY ROAD AND GALE LEMERAND DRIVE



In strengthening its commitment to a healthy future for the citizens of Florida and the nation, the University of Florida is building a new home for research that will speed scientific discoveries to patients. Join us as we launch construction of the Clinical and Translational Research Building.

The new complex will spark collaboration and spur medical advances by bringing together research teams from a range of scientific disciplines. The building will house UF's Institute on Aging, the Clinical and Translational Science Institute and an array of other research departments and clinical programs. The \$45 million, 120,000-square-foot building is designed to meet the highest sustainability standards aimed at conserving resources, reducing pollution and making indoor spaces conducive to good health and well-being.

WELCOME

J. Bernard Machen, D.D.S., Ph.D.
President, University of Florida

REMARKS

David S. Guzick, M.D., Ph.D.
Senior Vice President for Health Affairs
President, UF&Shands Health System

Marco Pahor, M.D.
Director, UF Institute on Aging

David R. Nelson, M.D.
Director, UF Clinical and Translational
Science Institute

Barbara M. Alving, M.D.
Director, National Center for Research Resources
National Institutes of Health

REFRESHMENTS

Wilmot Gardens

UF | UNIVERSITY of
FLORIDA

RSVP  BY MAY 19TH | EVENTS@HSC.UFL.EDU | 352-273-8677